

PROJECT SHOWCASE

CORPORATE



HINES' WILLIAMS TOWER

FACILITY SIZE

1.4million sqft, 64 stories

COMPLETION DATE

May 2017

LOCATION

2800 Post Oak Blvd, #101
Houston, TX 77056

DEMOGRAPHICS

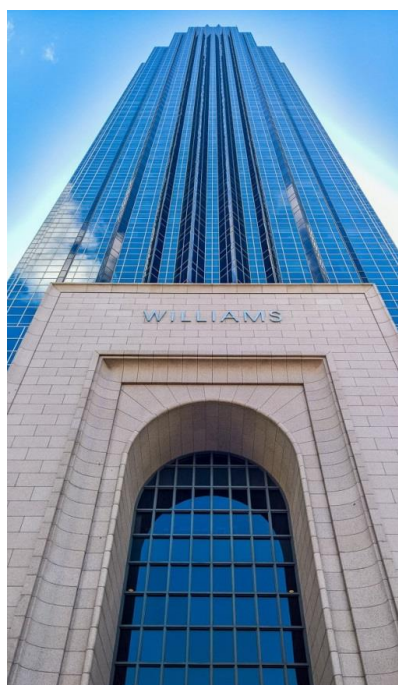
All fitness levels
Moderate to high usage

WEBSITE

www.williamstower.com

THE ICONIC HOUSTON OFFICE BUILDING SOARS ABOVE AND BEYOND

Uptown Houston's Galleria area is well-known for its competitive and crowded mixed-use real estate market. Standing out from the crowd quite literally is Hines Tower, known to most Houstonians as the impressive building directly across from the Hines Waterwall. Owned by Hines and managed by Invesco Real Estate, the landmark features an 88-foot granite arched entry way, helipad, and revolving rooftop beacon. The fitness and wellness program launched in May 2017 was the first of its kind by Invesco and Hines, developed to meet the evolving needs of tenants. "We aim to provide space and amenities which allow businesses to thrive and be highly efficient. We believe that tenants at Williams Tower will find this amenity extremely useful," said Property Manager Shannon Davenport. The members-only facility offers private and group personal training, group exercise classes, and a complimentary fitness assessment for all new members. Managed by Trophy Fitness, the center also has certified personal trainers and a licensed massage therapist on-site.



EQUIPMENT SHORTLIST

800 Series Cardio – 19pcs:

- 7 Treadmills
 - 2 Adaptive Motion Trainers
 - 6 Elliptical Crosstrainers
 - 3 Recumbent Bicycles
 - 1 Upright Bicycle
-
- 3 8-Series Gauntlet Stairmasters
 - 10 Keiser M3i Bicycles
 - 6 Discovery Line strength machines
 - 5 Adjustable Benches
 - 20 pairs of dumbbells
 - 1 Hoist Motion Cage Package
 - 1 Deluxe Self-Guided Prism Pack





